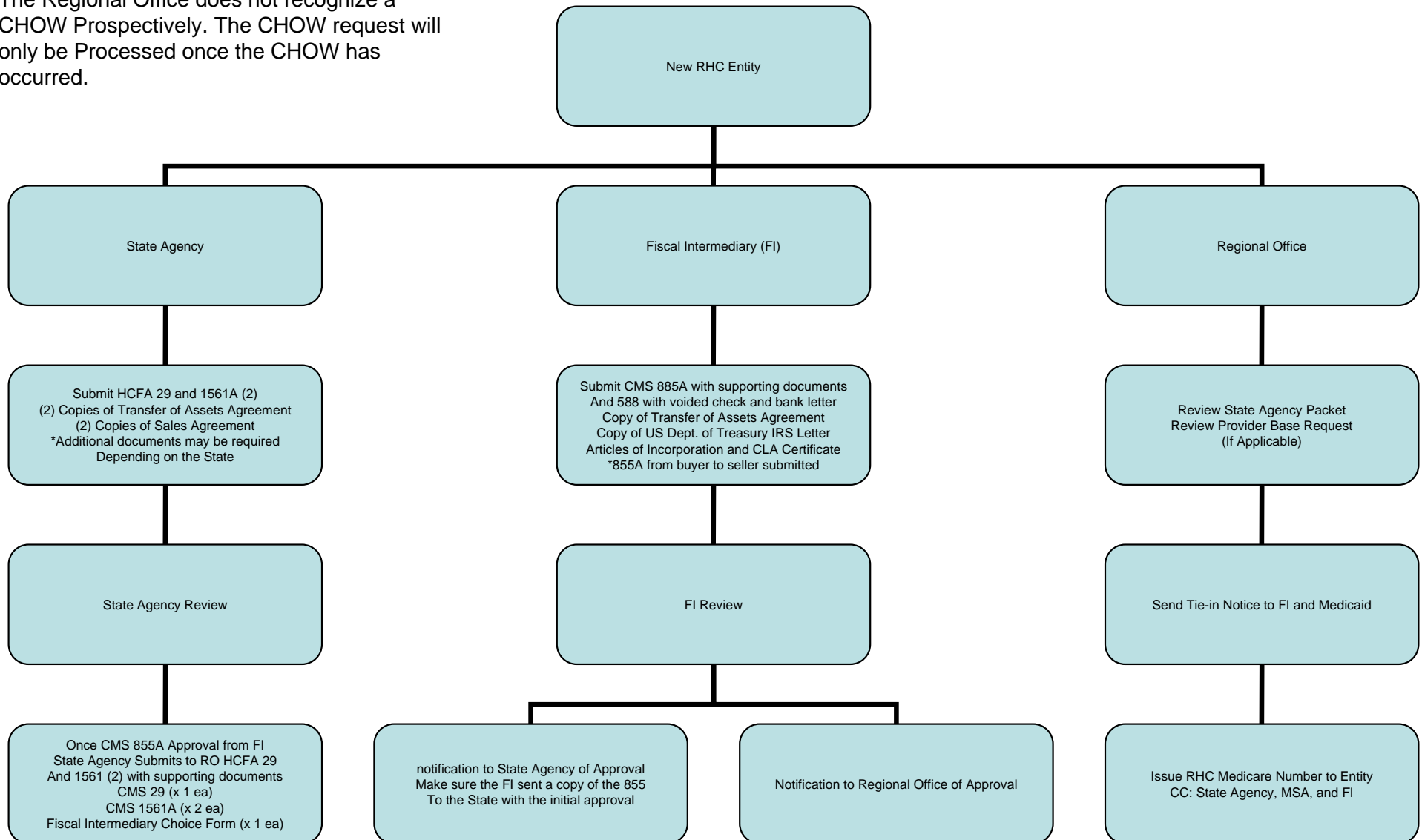


RHC CHOW

New of Purchasing Owner Responsibilities

The Regional Office does not recognize a CHOW Prospectively. The CHOW request will only be Processed once the CHOW has occurred.



* Estimated time to receive approval from submission of CHOW until approval letter is received is 60-90 days. This is our experience. Please note that CMS states it can take 6-9 months to receive final approval.